



# Vision & Ethos

To deploy expert pastoral care and targeted academic monitoring to develop highly qualified, aspirational and future-ready young adults, who make outstanding progress and, as active citizens contribute significantly to their school and local community.



## RESPECT

We understand that every person is important, and we respect EVERYONE for whom they are.



## ASPIRATION

We enjoy CHALLENGES and aspire to be better tomorrow than we are today.



## WISDOM

We admire the best of human achievements and we aim to become EXPERTS.



## COMMUNITY

We take an active part in our community in order to create belonging, fellowship and IDENTITY.

# Headteacher's welcome

**It gives me great pleasure to welcome you to our Sixth Form prospectus.**

Barnhill Sixth Form is a high-performing Sixth Form serving the community of Hillingdon.

We see our sixth form as the first choice for our students and a growing first choice for all students in this area. We have recently increased our capacity to accept more students and our results are increasing each year.

Our ethos is based upon the values of respect, wisdom, aspiration and community. These values are also captured by our school motto:

‘Together, achieving our best.’

You will read in this prospectus of the high-quality team of experts in place to support every student in their journey to the country's best universities and employers. Students are challenged and supported to aim to reach and exceed their potential by expert and committed teachers. We treat every student

as an individual and we are able to support them to reach whatever destination they choose. Each year more of our students are achieving higher results and we take great pride in their incredible achievements.

If you wish to know more about study and life at the Barnhill Sixth Form, please do make contact with us.

Mr J. Jones



# Welcome to the Sixth Form

Here at Barnhill Sixth Form we are committed to providing a first-class teaching and learning experience to ensure all students reach their fullest potential. Lessons are led by outstanding teachers and subject experts who are supported by experienced pastoral leaders.



Barnhill boasts results that, in the last external examinations, placed us as the top performing Sixth Form in Hillingdon and in the top 6% nationally for progress. Attainment has risen sharply, with 55% Grade B or higher, 30% A or higher and 10% A\* across all subjects at A level. We are also a National Centre of Excellence for Maths and Science and three of our subjects (Chemistry, Physics, and Psychology) are ranked 1st in the London Borough of Hillingdon for pupil progress.

To equip you with the vital life skills you will need to succeed at top universities and in demanding careers, our Enrichment Programme plays a key role in training all pupils to become successful Sixth Form students and in educating you about the university application process.

We work hard to nurture character, independence and resilience; and encourage all students to contribute significantly to their school and local community by assisting in the learning of younger students as part of the 'Contribution To Community' Programme. The Student Leadership Team led by the Head Students and the Sixth Form Prefects play a significant role in gathering student voice at the Student Council and providing school leaders with direction for school development.

We focus keenly on ensuring that all Year 11 applicants to our Sixth Form receive the correct guidance to move on to the right subjects to achieve outstanding results. The purpose of this prospectus is to equip you with the information you need to make the right choice about your post-16 education; the qualifications and subjects we offer, how to apply and why we believe Barnhill is locally the best post-16 education provider for you.

I guarantee that if you choose Barnhill Sixth Form you will receive the highest level of support from all of the Sixth Form Team to ensure you move on to only the best universities, apprenticeships and careers in the future.

*D Edwards*

Mr D Edwards  
Assistant Headteacher



# Welcome from the Head Students

Dear Year 11 students,

Your GCSEs are stepping-stones to exciting A Levels; the skills you learn from your GCSE subjects transfer directly to the Sixth Form subjects you select. For this reason, you should pick appropriate subjects as skills are taught to mastery level; where you learn more intricate concepts and skills than you learnt in GCSEs. A Levels focus more on evaluation, arguments, advanced application of knowledge and complexities. It is advisable to research extensively what specific subjects entail, to ensure you thrive at Barnhill Sixth Form.

Independence is abundant at Sixth Form, so you must not only pick the subjects which you are skilled in but pick the subjects which interest you the most. Lessons develop your core understanding, but with multiple study periods available on the Barnhill timetable, there is plenty of time to independently learn content, work with peers and consolidate learning outside your lessons. The study room is always open after school at Barnhill, so there is always a quiet place to study if you need it.

We have both taken a variety of subjects (Humanities, STEM and Sports) and can testify that subject teachers track progress through insightful and ongoing assessment. Your close relationships with your teachers and their understanding of your knowledge gaps or strengths will support you to flourish at Sixth Form. Our teachers go far beyond the syllabus and you will find it useful to read the plethora of resources they give you to heighten your understanding of the subject and to help develop research skills and critical thinking.

Barnhill has the highest standards and expectations for its students. We are fully supported by an experienced and seasoned Sixth Form Team who will know how to guide you through a challenging but incredible two years. We wish you the best of luck in your time at Barnhill Sixth Form.



## The Sixth Form

We have a dedicated Sixth Form Centre, with two study rooms, both equipped with ultra-modern IT facilities to encourage collaboration on projects and further study. These rooms are located adjacent to the pastoral and academic teams who are on hand for drop-in meetings and one-to-one support. Students can also access essential advice from two non-teaching members of the team; an Academic Mentor and an independent Careers Advisor who are positioned at the heart of the new Sixth Form Centre.

### Independent Study

Your time outside of subject lessons is important in scaling up your subject knowledge and preparing for future lessons. We support all students by timetabling Private Study in fully staffed and well equipped Study Rooms. Learning Technology is a cornerstone of the school teaching and learning community.

As Sixth Form students you will receive a free Microsoft Office 365 account. This will give you access to a school email account and other applications online including Microsoft Teams which we use to set rigorous and challenging home learning in every subject. You will also be able to make use of Microsoft OneDrive with 1GB of free online storage for all of your files and work.

### The Sixth Form Team

Our goal is to support and retain every student we enrol from Year 12 to Year 13 in order for them to achieve the best possible academic results. To complete this mission we guarantee the highest calibre of pastoral support and targeted academic guidance to ensure pupils feel safe, secure and make fantastic progress. Our Sixth Form students are supported by a team of six members of staff; the Assistant Headteacher for Key Stage 5, Head of Year 12 and 13, Raising Standards Leader and Deputy Raising Standards Leader, Academic Mentor and an independent Careers Advisor.

To enhance student welfare all students are assigned a Form Tutor who teaches one or more of their subjects and in addition benefit from a lengthy tutor period of 30 minutes each morning. Students bond quickly in subject specific tutor groups and go on to make close and lasting friendships.

## The Character Curriculum

Fantastic results open doors for our students, but character and effort complete the triumvirate of factors which help them walk through. We work hard in a number of ways, to develop character, responsibility and maturity with our students.

The Enrichment Programme is an important aspect of the character curriculum at Barnhill Sixth Form. This is compulsory for all students once a fortnight and aims to further student development and teach a range of life skills in ways which academic subjects may not.

Students choose from a carousel of activities including university cooking and food budgeting, team sports, yoga and wellbeing, dance, music, drama, study skills, financial literacy education and university and apprenticeship guidance with a particular focus on the UCAS process. We punctuate our programme with visits from charities and inspirational speakers from various careers and backgrounds.

Under the Contribution To Community Programme (C2C) students are encouraged to look for opportunities to give back to their school and community. Many students assist in classrooms at Belmore Primary School and Sports Leaders run sports clubs also. The Sixth Form also take a lead in fundraising in the school and annually raise hundreds of pounds for good causes.

The School Debate Club is led principally by the elected Sixth Form Student Leadership Team but remains an open invitation for all members of the school community to learn about current affairs and controversial topics.

Our Form Tutors contribute greatly to student development through delivery of the PSHCE programme each week in which they educate students to take care of their physical and mental health and wellbeing. The News & Views information they also share weekly ensures that students are informed about important and breaking local, national and global news stories.



## High Expectations

We shape our students to become fully independent and highly organised learners. We understand the challenges of moving from Year 11 to Sixth Form and we plan our pastoral and academic interventions alongside the Enrichment Programme to support our pupils in making that transition. At all times we expect our students to be remarkable role models for younger pupils and have exceptionally high standards of their punctuality, attendance and behaviour.

### Dress Code

We expect Sixth Form students to dress smartly every day and you are required to wear smart, professional, business attire suitable for the modern workplace. A full suit or jacket/blazer, collared shirt or blouse, tie, formal skirt or trousers and leather shoes are acceptable. More details of the Sixth Form Dress Code can be found in the Sixth Form section of the school website.

Financial support may also be available to support you in your Sixth Form studies. More information about the 16-19 Bursary can be found on the Sixth Form section of our website.

# Results & Destinations

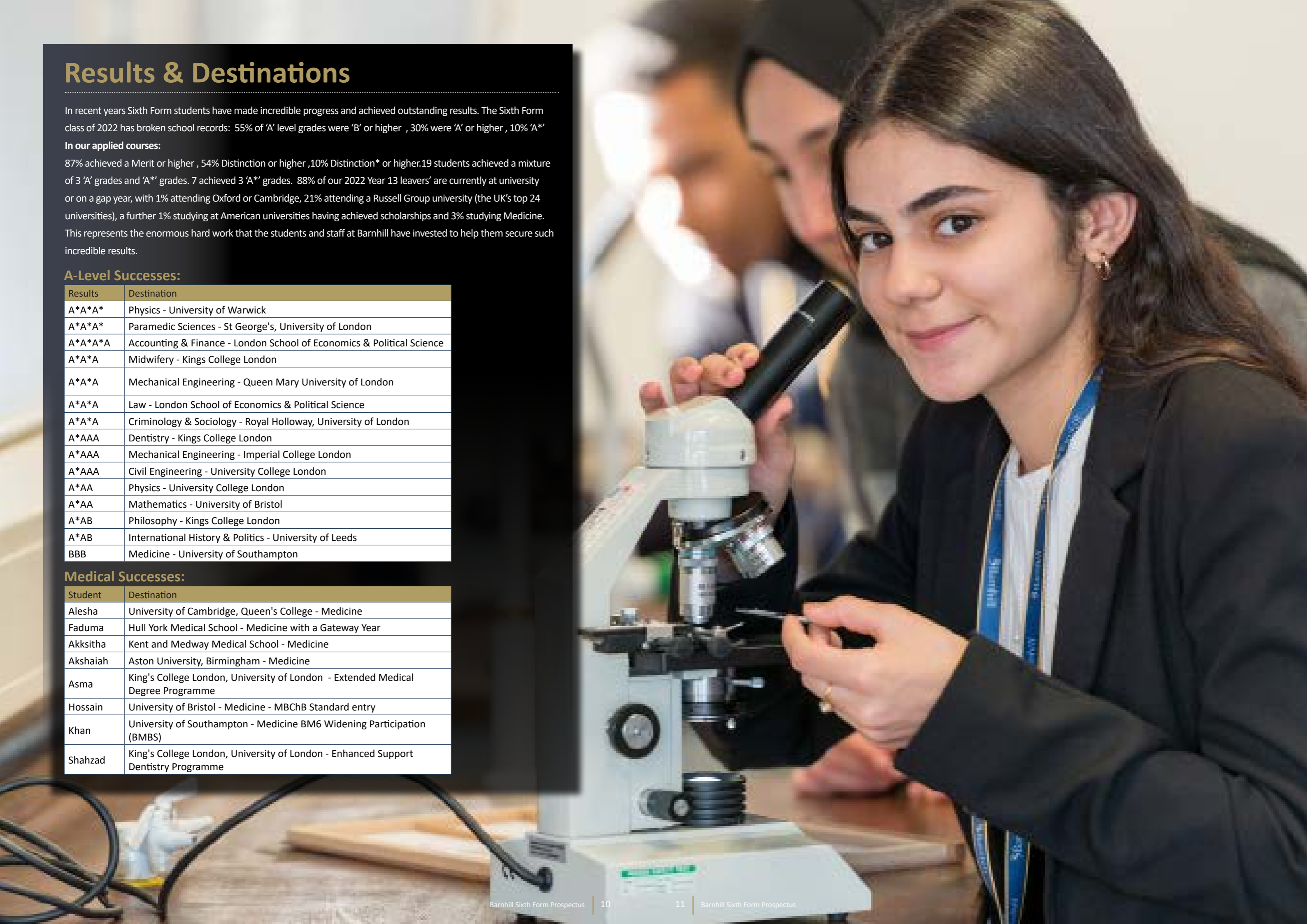
In recent years Sixth Form students have made incredible progress and achieved outstanding results. The Sixth Form class of 2022 has broken school records: 55% of 'A' level grades were 'B' or higher , 30% were 'A' or higher , 10% 'A\*' **In our applied courses:** 87% achieved a Merit or higher , 54% Distinction or higher ,10% Distinction\* or higher.19 students achieved a mixture of 3 'A' grades and 'A\*' grades. 7 achieved 3 'A\*' grades. 88% of our 2022 Year 13 leavers' are currently at university or on a gap year, with 1% attending Oxford or Cambridge, 21% attending a Russell Group university (the UK's top 24 universities), a further 1% studying at American universities having achieved scholarships and 3% studying Medicine. This represents the enormous hard work that the students and staff at Barnhill have invested to help them secure such incredible results.

## A-Level Successes:

Results	Destination
A*A*A*	Physics - University of Warwick
A*A*A*	Paramedic Sciences - St George's, University of London
A*A*A*A	Accounting & Finance - London School of Economics & Political Science
A*A*A	Midwifery - Kings College London
A*A*A	Mechanical Engineering - Queen Mary University of London
A*A*A	Law - London School of Economics & Political Science
A*A*A	Criminology & Sociology - Royal Holloway, University of London
A*AAA	Dentistry - Kings College London
A*AAA	Mechanical Engineering - Imperial College London
A*AAA	Civil Engineering - University College London
A*AA	Physics - University College London
A*AA	Mathematics - University of Bristol
A*AB	Philosophy - Kings College London
A*AB	International History & Politics - University of Leeds
BBB	Medicine - University of Southampton

## Medical Successes:

Student	Destination
Alesha	University of Cambridge, Queen's College - Medicine
Faduma	Hull York Medical School - Medicine with a Gateway Year
Akksitha	Kent and Medway Medical School - Medicine
Akshaiah	Aston University, Birmingham - Medicine
Asma	King's College London, University of London - Extended Medical Degree Programme
Hossain	University of Bristol - Medicine - MBChB Standard entry
Khan	University of Southampton - Medicine BM6 Widening Participation (BMBS)
Shahzad	King's College London, University of London - Enhanced Support Dentistry Programme





**Top Tips From Barnhill Sixth Form Alumni:**

*“Start working as soon as possible, look for super-curricular activities that may relate to the subject you want to study further, not only will that be useful to put on your personal statement to attract prestigious universities but it will give you an idea if the course you want to do at university is the right course for you.”*  
Adel Abdereshed

*“When you’ve finished Year 11 you know what you like and don’t like in regards to subjects. If you really enjoy a subject then you should pick that if you excel in it and as long as it is related to something you might do in the future as a degree or career.” “You have to be willing to improve, listen to what went wrong and practice in these areas so that you can improve your weak points in a subject. Have the willingness to improve even if things look like they aren’t turning out well. Throughout the years, in mock exams and tests, with effort, you will see improvement.”*  
Mohamed Omar

# The Sixth Form Curriculum

Outstanding teaching and learning is the cornerstone of any Sixth Form and we combine our work with the work of our diligent and enthusiastic teaching staff. The Barnhill Sixth Form curriculum is one of the widest and most varied in the London Borough of Hillingdon. We offer a total of 18 different A Level subjects and 6 Applied subjects. All of our courses are taught by subject experts at Barnhill Community High School.

ADVANCED LEVEL SUBJECTS			APPLIED SUBJECTS
• Art	• French	• Photography	• Business Studies
• Biology	• Further Maths	• Physics	• Health & Social Care
• Business	• Geography	• Politics	• IT
• Chemistry	• History	• Psychology	• Medical Science
• Economics	• Mathematics	• Sociology	• Music
• English Literature	• Philosophy & Ethics	• Spanish	• Sport



Are you aiming for the stars? We also offer the **Extended Project Qualification (EPQ)** as an additional qualification to suitable students which is worth the equivalent of half an A Level. It is highly regarded by Russell Group Universities in higher education applications.

# Advanced Level and Applied Subjects

Frequently asked questions from Sixth Form applicants about our curriculum offer.

**How are A Level and Applied subjects different?**

A Level subjects are generally more academic and require more developed reading, writing and mathematical skills. Applied subjects have more direct application to the world of work e.g. Business Studies, Health & Social Care or Medical Science.

These differences affect how the subjects are then taught in class. Another key difference is the way that they are assessed by the teacher.

A Level subjects place more importance on the final examinations in Year 13 and less importance on coursework, whereas an Applied subject will have a much greater focus on a sequence of pieces of coursework and an examination which counts less towards your overall grade.

**Can I study A Levels and Applied subjects together?**

Yes. The Sixth Form pathways are explained in the final pages of the prospectus and you can choose either all A Levels, a combination of both or all Applied subjects.

**Are they worth the same?**

Can I still go to university if I study Applied subjects? Yes, all of the subjects at Barnhill Sixth Form are Level 3 subjects so an Applied subject is worth exactly the same number of UCAS points as an A Level when It comes to applying to study a degree at university.

Success in any subject and on any pathway could lead to a university degree, degree-level apprenticeship, further training or employment. Our curriculum sets no limits on your future.

**Who decides whether I get into the Sixth Form or not?**

Ultimately, you do. Your work ethic and final GCSE grades across a range of subjects decide whether you can attend Barnhill Sixth Form. The minimum entrance criteria is 5 GCSE grades 9-4 to study most Applied subjects and 5 GCSE grades 9-5 to study A Levels but subject specific entrance criteria must also be met.



**HOW DO I APPLY?**

For more information on how to apply to Barnhill Sixth Form please go to the back of the prospectus or visit the Sixth Form ‘Application Information’ section of the website. Becoming a successful A-level student begins with taking the time to select the right type of course and subject for you. On the pages which follow you will find summaries of detailed course information.

## Fine Art

Course: A Level   Exam Board: AQA

**Entry Requirements:**  
Five or more GCSE Grades 9-5 including English and Maths and GCSE Art Grade 5 preferable.

**Assessment:**  
Unit 1 (60%): Personal Investigation And Written Person Study - Coursework (Portfolio Of Work)  
Unit 2 (40%): Examination Project - Exam (15 hours)

**Course Description:**  
Are you a creative, independently minded person? Are you dedicated and passionate? If you answered yes to these questions then A Level Fine Art is the course for you. Students will research ideas, themes and concepts through an exploration of artists and their work, understanding how and why an artist made their work whilst developing the ability to analyse and offer their own personal judgements.

Students will observe and record ideas using a variety of methods which provide them with the fundamental skills required to evolve and extend practical and theoretical skills. Year 12 is an exciting opportunity for students to develop key skills in a variety of mediums, completing an introductory course where a wide-range of materials and techniques are explored. Year 13 offers students the opportunity to grow in independence and explore their own studio practice, working with themes, materials, techniques and processes that personally interest them. A final art show allows for friends and family to celebrate students’ success at the end of the course.

**Extra-Curricular Opportunities:**

London possesses a wealth of opportunity for students to explore world famous museums and galleries that represent the very best in fine art. Throughout the course, students will visit various cultural institutions such as the Tate Modern Gallery, British Museum and the V&A. They will also visit the capital to gain relevant first hand research to enrich their studies. Workshops at venues such as the Royal Academy of Art also make up part of the wide range of experiences we deliver for our students.

**Additional Support:**  
We rigorously track student progress through the use of personal learning journals designed to track each students’ artistic journey. Students are formally assessed in mock exams in order to adapt to the time pressures and constraints of a real exam situation. The department supports students further through individual tutorial time, personalised learning checklists and student specific workshops. Students also receive regular progress checks to make sure their coursework is completed in preparation for the final review in Year 13

**Progression Routes:**  
Our creative industries are worth more than £100 billion a year and they employ 3.2 million people in the UK. 87% of jobs in the creative industries are futureproof and are at low risk of automation. The study of art is special because students investigate, create, critique, and celebrate the many achievements, ideas and values of our human world, grappling with the problem of the human condition.

Many students go on to degree courses in a wide variety of Arts subjects including; Fine Art, Art History, Graphic Design, Fashion Design, Illustration, Textiles, Film & Animation, Ceramics, Industrial Design, Interior Design and Advertising & Marketing.

**Curriculum Leader:** MS. MITCHELL: [rmitchell@barnhill.school](mailto:rmitchell@barnhill.school)

# Biology

Course: A Level Exam Board: AQA

## Entry Requirements:

Five or more GCSE Grades 9-5 including English and Maths and GCSE Biology Grade 7 or GCSE Combined Science Grade 7/7.

## Assessment:

Unit 1 (35%): Topics 1-4, including practical skills - Exam (2 hours)

Unit 2 (35%): Topics 5-8, including practical skills - Exam (2 hours)

Unit 3 (30%): Topics 1-8, including practical skills - Exam (2 hours)

## Course Description:

The biology course encourages students to develop essential knowledge and understanding of different areas of biology and how they relate to each other. Students will develop and demonstrate a deep appreciation of the skills and understanding of scientific methods and understand how society makes decisions about scientific issues and how the sciences contribute to the success of the economy and society. ~

## Extra-Curricular Opportunities:

Students will undertake 12 required practical experiments, this will help them build on their lab skills ready for University. In the summer term of Year 13, pupils make a day trip for one of their required practical experiments where they will be looking at the distribution of a given species in a habitat.

Students will also carry out a range of dissections throughout the course such as rat, heart and fish dissections. There is a chance for students to visit university lectures to build on their current biology knowledge

## Additional Support:

We rigorously track pupil progress using the Biology practical tracker system and personalised learning checklists. Pupils receive regular exam practice throughout the year as well as additional projects such as journal reviews to enable them to access university level learning. We support flipped learning for students which means they will need to come prepared for each lesson and we will build further and deeper knowledge with the use of lesson time. Pupils also receive regular folder checks to make sure their classwork is completed in detail and remains well organised for exam revision.

## Progression Routes:

Biology students will be able to apply their knowledge to critical situations within Science; analyse and communicate ideas and arguments effectively; and develop excellent literacy and essay writing skills.

A Level Biology allows students to gain access to university degree courses to enter certain careers such as; researchers, teachers, police officers and other public servants, doctors, nurses, medical laboratory assistants and pharmaceutical sales.

Curriculum Leader: MS. KAUR : [pkaur@barnhill.school](mailto:pkaur@barnhill.school)

# Business

Course: A Level Exam Board: Edexcel

## Entry Requirements:

Five or more GCSE Grades 9-5 including English and Maths and GCSE Business Studies Grade 6 or English GCSE Grade 6.

## Assessment:

Unit 1 (35%): Marketing, People And Global Business - Exam (2 hours)

Unit 2 (35%): Business Activities, Decisions and Strategy - Exam (2 hours)

Unit 3 (30%): Investigating Business In A Competitive Environment - Exam (2 hours)

## Course Description:

The course design aims to challenge all students of business by making them aware of business on a micro, local, national and international scale. The broad range of topics covered will ensure they leave the course with a solid foundation of knowledge to be able to study business or business related topics at degree level.

## Additional Support:

We rigorously track pupil progress using our data sheets and pupils receive regular exam practice throughout the year. Students will be confident in how to approach questions depending on the command words and are familiar with the assessment objectives. Pupils also receive regular folder or book checks to make sure their classwork is completed in detail and remains well organised for revision.

## Progression Routes:

Knowledge of business is critical in the 21st century; pupils will develop analytical thinking skills and make informed judgements and realistic business recommendations for a wide variety of business case studies and scenarios.

A Level Business is a useful and often necessary subject to seek certification in for certain careers that use the skills listed above, for example: business managers, human resources specialists, marketing managers, accountants, economists, sales managers, international business relations and operations managers for small and large businesses.

Curriculum Leader: MR. CHURCH : [jchurch@barnhill.school](mailto:jchurch@barnhill.school)

# Chemistry

Course: A Level Exam Board: AQA

## Entry Requirements:

Five or more GCSE Grades 9-5 including English and Maths and GCSE Chemistry Grade 7 or GCSE Combined Science Grade 7/7.

## Assessment:

Unit 1 (35%): Physical And Inorganic Chemistry - Exam (2 hours)  
Unit 2 (35%): Physical And Organic Chemistry - Exam (2 hours)  
Unit 3 (30%): General Chemistry And Practical Skills - Exam (2 hours)

## Course Description:

This course offers students the opportunity to gain a broad understanding of all the key concepts which underpin Chemistry. Chemistry stretches students to explain ideas theoretically, followed by thorough justification using mathematics, diagrams and practical experiments. Students work through topics in physical, inorganic and organic chemistry in Year 12, which then forms the foundation for the most challenging ideas which are taught in Year 13. This is supported by students completing twelve required practicals which are additionally assessed during the lesson and students document their work for this in a lab book. The students are expected to meet five key competencies which support them to write methods, select apparatus, assess safety, record results and analyse data.

## Extra-Curricular Opportunities:

All students are invited to participate in the Royal Society of Chemistry Olympiad, which challenges students to solve complex problems with real life application. Students are supported to apply for work experience in chemical companies so they can apply their skills in the workplace. Additionally students support in lower school lessons and demonstrate their practical skills at open evenings. Students are also encouraged to attend lectures, summer schools and workshops at major universities which over half of students partake in throughout their studies

## Additional Support:

Students are tracked at the end of each topic and at the end of each half term, so that the department can intervene and support regularly. In addition we have key assessment dates so students can demonstrate their knowledge in a formal exam. Homework is designed to support revision by focusing on topics from the previous term or year so students can continue to consolidate knowledge.

## Progression Routes:

Chemistry students develop many desirable skills throughout the course which are highly regarded by universities and employers. These include analysing data, writing reports, mathematical skills, practical skills, independent thinking, problem solving, team work, modelling, evaluation and applying knowledge to real world examples.

Chemistry is often a necessary subject to study for students wishing to pursue medicine, natural science, dentistry, veterinary medicine, biochemistry, pharmacy and chemical engineering. In addition many careers including environmental scientist, forensic scientist and researchers require chemistry at A level

Curriculum Leader: MR. BABBER: [sbabber@barnhill.school](mailto:sbabber@barnhill.school)

# Economics

Course: A Level Exam Board: AQA

## Entry Requirements:

GCSE Maths Grade 7 and English Grade 7.

## Assessment:

Unit 1 (33.3%): Markets And Market Failure - Exam (2 hours)  
Unit 2 (33.3%): National And International Economy - Exam (2 hours)  
Unit 3 (33.3%): Economic Principles And Issues - Exam (2 hours)

## Course Description:

Economics is designed to apply economic theory to support analysis of current economic problems and issues, and encourages you to appreciate the interrelationship between microeconomic and macroeconomics. You will explore the disagreements that exist between economists and current economic controversies. You will come to appreciate why such disagreements exist and the basis on which judgements are made. Economics solves problems by abstraction – breaking a problem into its various components, as any one thing has various factors influencing it; to analyse by observing past data, as well as what theory predicts, to investigate which choices are being made and why.

## Extra-Curricular Opportunities:

Throughout the course opportunities are provided to debate current issues, for example; the potential impact of Brexit on individual consumers, business and the UK economy; to the implications of an ageing UK population. In Year 13 students attend lectures on examination preparation and techniques in central London which are run by chief examiners for the AQA exam board.

## Additional Support:

Throughout the course a variety of assessment styles are used including real life case studies and data exercises to better prepare you for further study and employment. You will be assessed on your ability to use both quantitative and qualitative evidence to evaluate arguments and to support judgements relating to economic issues and problems. Rigorous tracking systems are implemented to see individual student progress over time and detailed feedback will be provided as to what you need to do to get to the next level.

## Progression Routes:

Economics is a discipline in its own right. It does not neatly fit into any box. Economics borrows from multiple sciences e.g. sociology and law; to explain why and how people act to improve their wellbeing and wealth.

By the end of the course you will have gained an understanding of what it means to be an independent learner to prepare you for the next phase of your learning journey whether studying for a degree, an apprenticeship or starting work. Economics complements a variety of occupations including investment banking, accounting, law, public service or business.

Curriculum Leader: MS. MOORE: [mmoore@barnhill.school](mailto:mmoore@barnhill.school)

# English Literature

Course: A Level Exam Board: OCR

## Entry Requirements:

Five or more GCSE Grades 9-5 including English and Maths and GCSE English Grade 6/6.

## Assessment:

Unit 1 (40%): Drama And Poetry Pre-1900: Hamlet, A Doll's House and The Merchant's Prologue and Tale

Exam (2 hours 30 minutes)

Unit 2 (40%): Comparative And Contextual Study: Unseen Gothic extracts, Dracula and The Bloody Chamber

Exam (2 hours 30 minutes)

Unit 3 (20%): Literature Post-1900: Swing Time, The World's Wife, A Streetcar Named Desire

Coursework

## Course Description:

The depth, breadth and richness of this course is designed to build upon and cultivate those skills taught at GCSE to enable students to become assiduous interpreters of language and sagacious readers of texts which cover 700 years of history ranging from the 14th - 21st Century. Our intentions are to understand more purposefully how meaning is crafted through an exploration of the social, economic, historical and political circumstances of the works in question alongside an appreciation of the critical theories which have informed their reception over time. The modules chosen provide students with the wherewithal to become excited by the texts they study which will encourage them to debate key questions and concerns about our society today.

## Extra-Curricular Opportunities:

In the Autumn term, Year 12 pupils go on an excursion to and attend a lecture by a Professor of Literature at Strawberry Hill House where Horace Walpole wrote the first Gothic novel which inspired a genre which has remained enormously popular with readers and audiences for over 250 years and in the Summer term attend a workshop hosted by the Royal Shakespeare Company to develop their understanding of Shakespeare's works. In Year 13 students will also be able to develop their research skills for their coursework and learn how to purposefully structure their responses for their summative examinations in the Summer

## Additional Support:

As a department, we use the online school data system to track the performance of every student to ensure success. After each assessment, targeted points of intervention are recorded to provide dedicated feedback to pupils to gauge understanding. Supplementary materials to support learning are also attached to develop their knowledge outside of the classroom in preparation for their exams and homework is electronically monitored to safeguard the academic welfare of students.

## Progression Routes:

English students will be able to evaluate, analyse and compare source materials critically and conceptually to form opinions which are independent and thought-provoking. They will be able to express themselves fluently and construct arguments supported by secondary resources to arrive at sound judgements and conclusions. They will be able to effectively and convincingly communicate and be understood in the world of academia and a wide variety of professions thereafter.

A Level English is an extremely versatile and well respected course with numerous career and postgraduate opportunities available. This includes: law, journalism, business, education, advertising, marketing, media, publishing and editing

Curriculum Leader: MS. SRIRAM [ssriram@barnhill.school](mailto:ssriram@barnhill.school)

# French

Course: A Level Exam Board: Edexcel

## Entry Requirements:

Five or more GCSE Grades 9-5 including English and Maths and GCSE French Grade 6.

## Assessment:

Unit 1 (40%): Listening, Reading & Translation - Exam (2 hours)

Unit 2 (30%): Written Response To Works & Translation - Exam (2 hours 40 minutes)

Unit 3 (30%): Speaking - Exam (20 minutes)

## Course Description:

French aims to develop the knowledge and skills acquired at GCSE level and use the language learned in a wider range of different contexts. Students will be able to gain a useful insight into another culture and reflect upon aspects of contemporary society. We investigate not only France but the greater Francophile nations with themes such as society and politics, music, festivals and tradition and topics such as immigration and multicultural society

## Extra-Curricular Opportunities:

We offer a variety of opportunities to enrich students' language learning with visits to French institutions in London. A trip to the "Institute Français" in the heart of South Kensington will help you discover the best of French culture and language. You will have the opportunity to watch a French film in the in-house cinema, and snoop around the resources of the biggest and most beautiful French library overseas. Students also take part in national competitions including debating, the French Olympiad and creative or analytical writing.

## Additional Support:

A four week transition period will enable you develop the skills necessary to confidently move from GCSE to A Level. You will also discover some exciting aspects of French culture. We will support you in developing good habits of independent study and learn how to manage your set pieces of homework. We have a wide range of online resources to inspire, intrigue and support you. In addition support sessions are run by our French Language Assistant.

## Progression Routes:

This course can lead to a degree as a main course of study or as an additional component in combined degrees. Languages are highly versatile and complement most subjects. By studying another language students will have the opportunity to enhance their employment prospects, facilitate foreign travel and experience the enjoyment and motivation of improving their linguistic abilities. Having a good level of French can open doors to careers in any industry and give you access to global markets as it is a language spoken in 29 countries.

Having an A Level in French will make your CV stand out from others, as it will highlight that you have a high level of communication and inter-cultural skills that are desirable in any professional setting.

Even if you do not wish to do a full or combined degree with French, many universities offer the opportunity to study for a semester abroad or continue your language learning as an extra module to your degree.

Curriculum Leader: MS. CASTRY: [vcastry@barnhill.school](mailto:vcastry@barnhill.school)

# Further Mathematics

Course: A Level Exam Board: Edexcel

## Entry Requirements:

Five or more GCSE Grades 9-5 including English and Maths and GCSE Maths Grade 8.

## Assessment:

Unit 1 (25%): Core Pure Mathematics - Exam (1 hour 30 minutes)  
Unit 2 (25%): Core Pure Mathematics - Exam (1 hour 30 minutes)  
Unit 3 (25%): Further Pure Mathematics - Exam (1 hour 30 minutes)  
Unit 4 (25%): Further Pure Mathematics - Exam (1 hour 30 minutes)

## Course Description:

The current course design aims to challenge all students of further mathematics with an experience which we know will prepare them for the next step into degree level education. Our curriculum is deliberately broad in content and challenges and stretches pupils' subject knowledge and skills.

We study a variety of topics with a focus on Core Pure Mathematics and Further Pure Mathematics. Students should gain an excellent understanding of a wide range of mathematical, critical thinking and problem solving skills extending them further in their mathematical understanding.

## Extra-Curricular Opportunities:

Students will have opportunities with the UK Senior Maths Challenge, Russell Group visits to universities, taster days with University STEM (Science Technology Engineering and Maths) departments and with our own gifted and more able maths club. We also have strong links with Brunel University's Department of Mathematics

## Additional Support:

We rigorously track pupil progress using the Mathematics Faculty data sheets and pupils receive regular exam practice throughout the year as well as additional projects and reading to improve their knowledge and understanding of the course.

## Progression Routes:

Further Mathematics is a versatile qualification, well-respected by employers. Careers for men and women with good mathematics skills and qualifications are usually well paid, but they are also often interesting and rewarding. Whilst the number of young people studying Further Mathematics is increasing there is still a huge demand from science, engineering and manufacturing employers.

A Level Further Mathematics students become better at thinking logically and analytically. Through solving problems you develop resilience and are able to think creatively and strategically. The writing of structured solutions, proof and justification of results help you to formulate reasoned arguments. Importantly you will have excellent numeracy skills and the ability to process and interpret data.

**Curriculum Leader:** MR M SANGHA: [msangha@barnhill.school](mailto:msangha@barnhill.school)

# Geography

Course: A Level Exam Board: Edexcel

## Entry Requirements:

Five or more GCSE Grades 9-5 including English and Maths and GCSE Geography or GCSE History or GCSE RE or GCSE English Grade 6.

## Assessment:

Unit 1 (30%): Physical Geography - Exam (2 hours 15 minutes)  
Unit 2 (30%): Human Geography - Exam (2 hours 15 minutes)  
Unit 3 (20%): Synoptic Paper - Exam (2 hours 15 minutes)  
Unit 4 (20%): Independent Investigation - Coursework (3000-4000 word essay)

## Course Description:

The course looks at a range of geographical areas within human and physical Geography, all of which revolve around key contemporary debates in the field. These include topics students may be familiar with; for instance, natural hazards and regeneration, as well as lesser-known units such as Superpowers and Globalisation. Students will also plan and conduct their own fieldwork enquiry, for which they will collect independent data on an area of interest in Geography.

## Extra-Curricular Opportunities:

There is a compulsory Year 12 field trip to FSC Flatford Mill, Colchester where students will collect data to inform their own geographical investigation. These workshops are run by specialists and will support students in their NEA, as well as bringing geographical concepts to life. The field trip involves the study of coastal landscapes in Walton-on-the-Naze, where they investigate the effectiveness of erosion management. Alongside this, students also investigate the urban landscape through Ipswich; allowing comparisons to be made with London.

## Additional Support:

Pupils receive regular exam practice throughout the year as well as additional projects and reading to improve their knowledge and understanding of the courses followed. We support smarter revision for students through the use of checklists for each exam topic studied. Pupils also receive regular folder checks to make sure their classwork is completed in detail and remains well organised for revision.

## Progression Routes:

Geography is a useful and often necessary subject to seek certification in certain careers that use the skills listed above, for example: marketing and finance, police officers and other public servants, environmental health, heavy industries like oil or other industrial jobs like aviation, land surveyors, agricultural jobs, broadcasting, teaching. The latest post-education employment statistics show that

geographers remain among the most employable university graduates. Geographers are less likely to be unemployed after their degree course than those studying almost any other subject.

**Curriculum Leader:** MISS. PANESAR: [jpanesar@barnhill.school](mailto:jpanesar@barnhill.school)

# History

Course: A Level   Exam Board: Edexcel

**Entry Requirements:**

Five or more GCSE Grades 9-5 including English and Maths and GCSE Geography or GCSE History or GCSE RE or GCSE English Grade 6.

**Assessment:**

Unit 1 (30%): Britain, 1625-1701 - Exam (1 hours 30 minutes)  
Unit 2 (20%): The Mongols c1167-1405 - Exam (1 hour)  
Unit 3 (30%): The British Empire: 1857-1965 - Exam (2 hours 30 minutes)  
Unit 4 (20%): Historical interpretations Focus - Coursework (3000-4000 word essay)

**Course Description:**

In A Level History, students will learn the powerful knowledge needed to understand not only modern Britain, but also the world. In Paper 1, students will learn about how Britain has come to be the nation it is today. From an in depth study of Winston Churchill during the Second World War to the end of his premiership, to understanding how Margaret Thatcher had impacted British politics. The course culminates with the rise of New Labour under Tony Blair. In Paper 2, students will learn of arguably one of the most notorious figures of history, Genghis Khan. Students will study in depth the rapid expansion of the Mongolian Empire under Genghis Khan and his successors. This paper will add not only an added global perspective but also enhance understanding of how empires have operated in history. If Paper 1 provides the understanding of Britain, and Paper 2 provides a non-Western study, Paper 3 and the study of the British Empire from 1857 to 1965 provides an understanding of the modern world. Spanning from the establishment of the British Raj in India in 1857, to the ‘Scramble for Africa’ in 1871, to the World Wars, to the Partition of India, to the Middle East including the Palestinian and Israeli conflict, the Suez Crisis to decolonisation, no study today greater informs the modern world. However, not only will this serve to understand the modern world, but also Britain’s role in this period including its methods imperialism and colonialism which have been called into question in recent years. The coursework will be a guided decision between student and teacher into a research question that most interests them. This will be researched independently under guidance from the teacher, with an extended essay focusing on historical interpretations.

**Extra-Curricular Opportunities:**

Year 12 pupils visit Parliament and Whitehall to witness the scene of Charles I’s trial and be-heading. Year 13 pupils will attend lectures on their examination topics in central London by some of the leading university tutors and authors in their fields.

**Additional Support:**

We rigorously track pupil progress using the school online live marking and grade tracker. Pupils receive regular exam practice throughout the year. Pupils also receive regular folder checks to make sure their classwork is completed in detail and remains well organised for revision.

**Progression Routes:**

Year 13 historians will be able to judge the value of historical sources, placing them within their wider contextual knowledge and critically examining the perspective of the author. They will recognise differing interpretations and understand how interpretations are constructed. Crucially, they will be able to reach criteria-rich judgments, as part of coherent and sustained extended pieces of writing.

By the end of the course they will have become fully independent and self-motivated learners ready to take on the challenge of a degree level course or enter into the world of work.

A Level History is unquestionably held in the highest esteem by universities, presenting a gateway to; law, journalism, banking, research, public relations, archivists, teachers, politicians, and many other careers informed by History’s plethora of transferable skills.

**Curriculum Leader:** MR KHAN: [akhan@barnhill.school](mailto:akhan@barnhill.school)

# Mathematics

Course: A Level   Exam Board: Edexcel

**Entry Requirements:**

Five or more GCSE Grades 9-5 including English and Maths and GCSE Maths Grade 7.

**Assessment:**

Unit 1 (33.5%): Pure Mathematics - Exam (1 hour)  
Unit 2 (33.5%): Pure Mathematics - Exam (1 hour)  
Unit 3 (33%): Statistics And Mechanics - Exam (2 hours)

**Course Description:**

The current course design aims to challenge all students of mathematics with an experience which we know will prepare them more than adequately for the next step into degree level education. Our curriculum is deliberately broad in content and challenges and stretches pupils’ subject knowledge and skills. We teach and study a variety of topics with focus on Pure Mathematics and Statistics And Mechanics. Students should gain an excellent understanding of a wide range of mathematical, critical thinking and problem solving skills.

**Extra-Curricular Opportunities:**

Students will have opportunities with the UK Senior Maths Challenge, Russell Group visits to universities, taster days with University STEM (Science Technology Engineering and Maths) departments and with our own gifted and more able maths club. We also have strong links with Brunel University’s Department of Mathematics..

**Additional Support:**

We rigorously track pupil progress using the Mathematics Faculty data sheets and pupils receive regular exam practice throughout the year as well as additional projects and reading to improve their knowledge and understanding of the course

**Progression Routes:**

Mathematics is a versatile qualification, well-respected by employers. Careers for men and women with good mathematics skills and qualifications are usually well paid, but they are also often interesting and rewarding. Whilst the number of young people studying Mathematics is increasing there is still a huge demand from science, engineering and manufacturing employers.

A Level Mathematics students become better at thinking logically and analytically. Through solving problems you develop resilience and are able to think creatively and strategically. The writing of structured solutions, proof and justification of results help you to formulate reasoned arguments. Importantly you will have excellent numeracy skills and the ability to process and interpret data.

**Curriculum Leader:** MR M SANGHA: [msangha@barnhill.school](mailto:msangha@barnhill.school)

# Philosophy & Ethics

Course: A Level Exam Board: Edexcel

## Entry Requirements:

Five or more GCSE Grades 9-5 including English and Maths and GCSE RE or GCSE History or GCSE Geography or GCSE English Grade 6.

## Assessment:

Unit 1 (33.3%): Philosophy Of Religion - Exam (2 hours)

Unit 2 (33.3%): Religion And Ethics - Exam (2 hours)

Unit 3 (33.3%): New Testament Studies - Exam (2 hours)

## Course Description:

In this course, atheists, agnostics, the religious and the very religious challenge scholarly and one another's thinking without attacking one another. Ever since humankind started to think, philosophy and morality has been a fundamental part of our development. In the 21st century, philosophy and religion still address the same eternal human questions about life and death, values and relationships, right and wrong. In Year 12 students look at arguments for and against the existence of God and moral issues such as equality, war and ethical theories. In Year 13 this is continued at a higher level with topics such as religion and morality, virtue ethics and religious experience. Over the two years there is an in depth study into the New Testament and whether we can know anything historical about Jesus..

## Extra-Curricular Opportunities:

Students will attend a conference chaired by the world-famous philosopher and author Peter Vardy, where students will debate and discuss issues such as euthanasia, abortion, free will and war.

## Additional Support:

So that students are prepared for their exams, they will complete an essay per topic. This ensures that all students are confident at each stage before moving on. Students are encouraged to do independent research, but we will guide students in the right direction when they find this difficult. Throughout the two years, students will debate the issues covered, allowing them to build their confidence with the key exam skills of formulating arguments, analysis and evaluation

## Progression Routes:

The rigorous intellectual discipline students develop will assist them in almost any further study or career. Students traditionally move on to degree courses such as Philosophy, Law, History, Politics and Psychology. However, there has been a recent rise in students combining this A Level with subjects such as Physics and Maths. Nationally, Philosophy and Ethics is the second fastest growing A Level exam subject.

In terms of careers, Philosophy and Ethics is seen favourably by employers in fields such as law, medicine, the public sector and any career involving working with other people.

**Curriculum Leader:** MR. WALLACE: [swallace@barnhill.school](mailto:swallace@barnhill.school)

# Photography

Course: A Level Exam Board: AQA

## Entry Requirements:

Five or more GCSE Grades 9-5 including English and Maths and GCSE Photography or GCSE Art Grade 5 preferable.

## Assessment:

Unit 1 (60%): Personal Investigation comprising of a sustained personal project and a 1000 word written element

Unit 2 (40%): Examination Project - Exam (15 hours)

## Course Description:

Are you a creative, independently minded person? Are you dedicated and passionate? If you answered yes to these questions then A Level Photography is the course for you. Students will research ideas, themes and concepts through an exploration of artists and their work, understanding how and why an artist made their work whilst developing the ability to analyse and offer their own personal judgements. Students will explore the use of both digital and traditional photography using a variety of methods which provide them with the fundamental skills required to evolve and extend practical and theoretical skills. Year 12 is an exciting opportunity for students to develop key skills in digital and darkroom technologies, completing an introductory course where a wide-range of materials and techniques are explored. Year 13 offers students the opportunity to grow in independence and explore their own photographic practice, working with themes, materials, techniques and processes that interest them

## Extra-Curricular Opportunities:

Throughout the course, students will visit various cultural institutions such as the Tate Modern Gallery, British Museum and the V&A. They will also visit the capital to gain relevant first hand research to enrich their studies. Workshops at venues such as the Royal Academy of Art also make up part of the wide range of experiences we deliver for our students. Workshops at various venues such as the Photographers' Gallery also make up part of the wider range of experiences we deliver for our students

## Additional Support:

We rigorously track student progress through the use of personal learning journals designed to track each students' artistic journey. The department supports students further through individual tutorial time, personalised learning checklists and student specific workshops. Students also receive regular progress checks to make sure their coursework is completed in preparation for the final review.

## Progression Routes:

Our creative industries are worth more than £100 billion a year and they employ 3.2 million people in the UK. 87% of jobs in the creative industries are futureproof and are at low risk of automation. The study of photography is special because students investigate, create, critique, and celebrate the many achievements, ideas and values of our human world, grappling with the problem of the human condition.

Many photography students go on to degree courses in a wide variety of subjects including; Photography, Art History, Graphic Design, Fashion Design, Illustration, Film & Animation, Industrial Design, Interior Design, Advertising & Marketing, and Architecture.

**Curriculum Leader:** MS. MITCHELL: [rmitchell@barnhill.school](mailto:rmitchell@barnhill.school)

# Physics

Course: A Level Exam Board: AQA

## Entry Requirements:

Five or more GCSE Grades 9-5 including English and Maths and GCSE Physics Grade 7 or GCSE Combined Science Grade 7/7 and GCSE Maths Grade 7.

## Assessment:

Unit 1 (34%): Measurements And Errors, Particles And Radiation, Electricity, Mechanics And Materials, Waves And Further Mechanics - Exam (2 hours)

Unit 2 (34%): Practical Skills, Data Analysis And Turning Points - Exam (2 hours)

Unit 3 (32%): Thermal Physics, Fields And Their Consequences And Nuclear Physics - Exam (2 hours)

## Course Description:

Physics gives the opportunity to explore the phenomena of the universe and to look at theories that explain what is observed. This subject combines practical skills with theoretical ideas to develop descriptions of the physical universe. The students will learn about everything from kinematics to special relativity and many recent developments in fascinating topics, such as particle physics.

Physics is more than a subject, it trains your brain to think beyond boundaries

## Extra-Curricular Opportunities:

In the summer term of Year 12, pupils make a day trip to Imperial College, London to attend the Particle Physics Masterclass programme to work with photomultiplier tube particle detectors and conduct experiments on cosmic ray muons. Year 12 and 13 students take part in three projects under the supervision of School of Physics and Astronomy, Queen Marys University. In the Spring term students make a day trip to HQS Wellington, a World War Two ship to attend STEM Physics activities.

## Additional Support:

We rigorously track pupil progress using the school online data sheets and pupils receive regular exam practice throughout the year as well as additional independent projects and reading to improve their knowledge and understanding of the course. We support smarter revision for students through the regular homework for each exam topic studied. Pupils also receive regular folder checks to make sure their classwork is completed in detail and remains well organised for easier revision

## Progression Routes:

Physics is essential for careers in engineering like the aerospace and aeronautical industries, physics, astrophysics, nanotechnology and the subject is also useful for maths, computing, radiology, physiotherapy, optometry, medicine, dentistry or the armed forces e.g. pilot. Physics graduates are sought after to work for financial institutions, employment in the energy industry e.g. nuclear power and alternative energy production. The logical thinking and problem solving skills acquired by the study of Physics makes physicists very employable. Physics graduates have a starting salary 15% above the average graduate salary.

**Curriculum Leader:** MR. THANIKASALAM: [sthanikasalam@barnhill.school](mailto:sthanikasalam@barnhill.school)

# Politics

Course: A Level Exam Board: Edexcel

## Entry Requirements:

Five or more GCSE Grades 9-5 including English and Maths and GCSE English Grade 6 or GCSE History Grade 6.

## Assessment:

Unit 1 (33.3%): UK Politics - Exam (2 hours)

Unit 2 (33.3%): UK Government - Exam (2 hours)

Unit 3 (33.3%): US Politics - Exam (2 hours)

## Course Description:

Quite simply, there has never been a more fascinating time to study Politics. The political climate of Brexit and Presidency of Donald Trump has stimulated interest, debate and uncertainty that makes this subject engaging and consistently relevant. Can we be trusted to govern ourselves or should others make decisions on our behalf? What is freedom? Do we have it? How can we change our lives for the better? If you take an interest in these sorts of questions, read the news and enjoy heated debate; if current affairs interest you, if you have a point of view and are not afraid to share it, then the study of politics is for you. The course involves significant reading, writing and classroom debate that will develop your sophisticated, informed and independent ideas and position on the ever changing world of political intrigue.

## Extra-Curricular Opportunities:

Students will go on a trip to Westminster to see for themselves the workings of Parliament. They will see the Palace of Westminster and both the House of Commons and Lords. Students will also attend a conference in London, debating current affairs and listening to guest speakers and examiners

## Additional Support:

So that students are prepared for their exams, they will complete an essay per topic. Students are encouraged to complete substantial independent research, but we will guide students in the right direction when they find this difficult and closely monitor their progress. Throughout the two years, students will debate the issues covered, allowing them to build their confidence and to assist with the key exam skills of formulating arguments, analysis and evaluation.

## Progression Routes:

Politics combines well with other essay based subjects such as English and History, where there is an emphasis on clear written communication, evaluation and analysis. In addition, subjects like Economics, Philosophy and Ethics, and Sociology include elements of political knowledge.

Students frequently move on to degrees in Politics, Law, International Relations, History, Economics and Journalism. This can later lead to careers as politicians, researchers, civil servants, diplomats, but is also useful if you are interested in law, journalism, marketing, charity and human rights work. An increasing number of Politics graduates now work in business and finance, working for organisations such as the UN, World Trade Organisation and the World Bank.

**Curriculum Leader:** MR. WALLACE: [swallace@barnhill.school](mailto:swallace@barnhill.school)

# Psychology

Course: A Level Exam Board: AQA

## Entry Requirements:

Five or more GCSE Grades 9-5 including English and Maths.  
6 in English, 6 in Math's, 6/6 Science (or two individual sciences)

## Assessment:

Unit 1 (33.3%): Introductory Topics In Psychology - Exam (2 Hours)  
Unit 2 (33.3%): Psychology In Context - Exam (2 Hours)  
Unit 3 (33.3%): Issues And Options In Psychology - Exam (2 Hours)

## Course Description:

As a science psychology functions as a thriving academic discipline and a vital professional practice, dedicated to the study of human behaviour and the thoughts, feelings, and motivations behind it. It uses observation, measurement, and testing in order to form conclusions that are based on sound scientific methodology. Many students find that as they study memory, social influence and other topics that they become better at understanding people and they also become better communicators as a result.

## Extra-Curricular Opportunities:

In the summer term of Year 12, pupils make a day trip to London Zoo where they experience a phobias workshop, run by a clinical hypnotherapist, where they will be introduced to phobia treatments. This links directly to psychology and the topic of psychopathology. In Year 13 pupils will attend lectures on their examination topics in central London by some of the leading university tutors, lead examiners and authors in their fields

## Additional Support:

We rigorously track pupil progress using the online school data system and encourage students to use their 'Learning Journeys' so they can take ownership of their progression. Students receive weekly exam practice and tests throughout the year as well as additional projects and reading to improve their knowledge and understanding of the course. We support smarter revision for students through the use of our subject shared area which contains additional booklets, model essays and exam practice questions. Pupils also receive regular folder checks to make sure their classwork is completed in detail and remains well organised for revision

## Progression Routes:

Psychology is a fascinating and challenging subject that helps develop a number of interpersonal and transferable skills. Students are expected to think critically about theories, psychological perspectives, and studies. Students will learn the rigorous scientific method and they are expected to understand the whole process.

A Level Psychology provides an excellent skillset for careers such as: psychotherapy/psychology (sports, clinical, educational, and forensic), market research, human resources, marketing, brand consultant, financial advisor, law, politics, teaching and probation/parole office.

Curriculum Leader: MS. CALAÇA: [icalaca@barnhill.school](mailto:icalaca@barnhill.school)

# Sociology

Course: A Level Exam Board: AQA

## Entry Requirements:

Five or more GCSE Grades 9-5 including English and Maths.

## Assessment:

Unit 1 (33.3%): Education Theory And Methods - Exam (2 Hours)  
Unit 2 (33.3%): Topics In Sociology - Exam (2 Hours)  
Unit 3 (33.3%): Crime And Deviance With Theory And Methods - Exam (2 Hours)

## Course Description:

As a science sociology functions as a thriving academic discipline dedicated to the study of societies and individuals through observation, measurement, and testing, in order to form conclusions that are based on sound scientific methodology. Many students find that as they study education, families, beliefs and other topics that they become better at understanding the dynamics in society and they also become better communicators as a result.

## Extra-Curricular Opportunities:

In the summer term of Year 12, pupils make a day trip to the V&A Museum of childhood where they experience a workshop about the social construction of childhood. There is an illustrated talk with images of childhood, followed by a small group discussion. This links directly to our topics of families and households as well as education. In Year 13 pupils will attend lectures on their examination topics in central London by some of the leading university tutors, lead examiners and authors in those fields

## Additional Support:

We rigorously track pupil progress using the online school data system and encourage students to use their 'Learning Journeys' so they can take ownership of their progression. Students receive weekly exam practice and tests throughout the year as well as additional projects and reading to improve their knowledge and understanding of the course. We support smarter revision for students through the use of our subject shared area which contains additional booklets, model essays and exam practice questions. Pupils also receive regular folder checks to make sure their classwork is completed in detail and remains well organised for revision.

## Progression Routes:

Students are expected to think critically about theories, perspectives, and studies. By the end of the course pupils will be independent thinkers capable of having sophisticated sociological arguments linked to families, beliefs, crime and globalisation.

Sociology provides an excellent skillset for careers such as: human resources, public relations specialist, social researcher, policy analyst, management consultant, law, social worker, politics, teaching and international aid/development worker.

Curriculum Leader: MS. CALAÇA: [icalaca@barnhill.school](mailto:icalaca@barnhill.school)

# Business Studies

Course: Applied Exam Board: Edexcel

### Entry Requirements:

Five or more GCSE Grades 9-4 including English and Maths. GCSE Business is an advantage but not essential.

### Assessment:

Unit 1 (33.6%): The Business Environment - Exam double weighted  
Unit 2 (16.6%): Working in Business - Exam  
Unit 4 (16.6%): Customers and Communication - Coursework  
Unit 5 (16.6%): Marketing and Market Research - Coursework  
Unit 8 (16.6%): Introduction to Human Resources - Coursework

### Course Description:

This course allows students to cover a wide range of business topics and will provide real world experiences. The topic of the business environment, will give learners an understanding of the wider external contexts in which businesses operate and of internal business functions and their interdependencies. The unit will allow them to appreciate how legal, financial, ethical and resource constraints can affect business behaviour and the influence that different stakeholders can have and how businesses must respond. Working in business, will give them an understanding of the type of critical skills needed when working in business, such as organisation, prioritisation and effective communication. The unit will allow them to learn how to use different business documents and about organisational protocols that most businesses would expect employees to follow. Customers and communication, will allow learners to appreciate how vital customers are to the success of a business. It will give them an understanding of how important it is for businesses to know their customers and what influences customer behaviour. In this unit, they will understand how to communicate with customers.

### Additional Support:

Students are supported throughout their course including tracking students' coursework progress using OCR tracking documents. Students will receive regular exam practice followed by thorough feedback. Students will be confident in being able to apply their answers to real business related scenarios and will be able to approach exam and coursework questions appropriately depending on the command word. Pupils also receive regular folder or book checks to make sure their classwork is completed in detail and remains well organised for revision.

### Progression Routes:

Knowledge of business is critical in the 21st century; pupils will develop analytical thinking skills and make informed judgements and realistic business recommendations for a wide variety of business case studies and scenarios.

Business Studies is a useful and often necessary subject to seek certification in for certain careers that use the skills listed above, for example: business managers, human resources specialists, marketing managers, accountants, economists, sales managers, and international business relations and operations managers for small and large businesses.

Curriculum Leader: MR. CHURCH: [jchurch@barnhill.school](mailto:jchurch@barnhill.school)

# Health & Social Care

Course: Applied Exam Board: Edexcel

### Entry Requirements:

Five or more GCSE Grades 9-4 including English and Maths.

### Assessment:

Unit 1 (25%): Human Lifespan Development - Exam (1 hour)  
Unit 2 (25%): Working In Health And Social Care - Exam (1 hour)  
Unit 5 (25%): Meeting Individual Care And Support Needs - Coursework  
Unit 12 (25%): Supporting Individuals With Additional Needs - Coursework

### Course Description:

The Health and Social Care course aims to provide an introduction to the workings of the care sector and covers a broad and balanced range of topics within the study programme. Pupils will cover physical, intellectual, emotional and social development across the human lifespan, and the factors affecting development and the effects of ageing; the principles and practicalities that underpin meeting individuals' care needs; the roles and responsibilities of workers and organisations and explore the role of health and social care services in providing care and support to individuals with additional needs

### Extra-Curricular Opportunities:

In the spring term of Year 13 pupils participate in a 10 day work experience placement. This is a great opportunity for students to get an insight into the care sector as well as being able to apply their subject knowledge in the workplace

### Additional Support:

We rigorously track pupil progress using the school online data sheets and pupils receive regular exam practice throughout the year as well as additional projects and reading to improve their knowledge and understanding of the course. Pupils also receive regular folder checks to make sure their classwork is completed in detail and remains well organised for revision.

### Progression Routes:

The Health And Social Care course provides plenty of transferable knowledge and skills such as, the ability to learn independently and the ability to research methodically.

Students can either progress onto a degree course to access careers in nursing, midwifery or teaching or move straight into a career in the health and social care sector with some further training: child minder, care home manager and care assistant.

Curriculum Leader: MS. JUMPP-GRAHAM: [cgraham@barnhill.school](mailto:cgraham@barnhill.school)

# IT

Course: Applied Exam Board: OCR

## Entry Requirements:

Five or more GCSE Grades 9-4 including English and Maths.

## Assessment:

Unit 1 (25%): Fundamentals Of IT - Exam (1 hour 30 minutes)  
Unit 2 (25%): Global Information - Exam (1 hour 30 minutes)  
Unit 3 (20%): Cyber Security - Exam (1 hour)  
Unit 8 (15%): Project Management - Coursework  
Unit 9 (15%): Product Development - Coursework

## Course Description:

This course aims to develop students' knowledge, understanding and skills of the principles of IT and Global Information Systems. Students will gain an insight into the IT sector as they investigate the pace of technological change, IT infrastructure, the flow of information on a global scale and the importance of legal and security considerations

## Extra-Curricular Opportunities:

In the summer term of Year 12, pupils make a day trip to Thorpe Park to undertake classes where they can see IT in action linked with a very high level of health and safety which is implemented across the park

## Additional Support:

An Excel based tracking tool is used to monitor the progress of students with personalised learning checklists and exam practice questions to encourage independent learning and improve their understanding of the course. Links to additional resources and industry vendors are shared to provide a practical perspective of theories studied in lessons. In addition to students taking control of their own learning, we carry out scheduled checks to ensure students are on track to exceed expectations

## Progression Pathways:

Students will develop professional, personal and social skills through interaction with peers and providing solutions for stakeholders and clients. This applied pathway is recognised by industry leaders such as Cisco, IBM, CompTIA and Barclays.

IT is a useful and often necessary subject to seek certification in certain careers, for example: network management, software development, games development, web developer, app developer, data analyst, network engineer, cyber security consultant, IT technical support, cloud analyst and cloud technician.

**Curriculum Leader:** MS. LIBAN: [nliban@barnhill.school](mailto:nliban@barnhill.school)

# Medical Science

Course: Applied Exam Board: WJEC

## Entry Requirements:

Five or more GCSE Grades 9-4 including English and Maths and GCSE Combined Science 5/5.

## Assessment:

Unit 1 (25%): Human Health And Disease - Exam (2 hours)  
Unit 2 (12.5%): Physiological Measurement - Coursework  
Unit 3 (12.5%): Medical Science Research Methods - Coursework  
Unit 4 (25%): Medicines And Treatment Of Disease - Coursework  
Unit 5 (12.5%): Clinical Laboratory Techniques - Coursework  
Unit 6 (12.5%): Medical Case Study - Exam (1 hour 15 minutes)

## Course Description:

Medical Science is the science of dealing with the maintenance of health and the prevention and treatment of diseases. In both Year 12 and Year 13 students will have to run 2 sizeable projects in which they collect data and present their findings to other staff members of the Science Department.

## Extra-Curricular Opportunities:

Students will have contact with health organisations such as doctors, consultants and nurses. This will allow them to truly understand the role of the professionals working in the NHS. Students will also take part in a day where organisations such as 'Medical Mavericks' attend school and allow the students to use devices such as an ECG or Ultrasound machine..

## Additional Support:

We rigorously track pupil progress, ensuring that coursework deadlines are met and pupils receive regular exam practice throughout the year. The teachers who have been selected to teach the course all have a Biology or Chemistry degree which will allow them to further pass on their knowledge to the students. The Medical Science team ensures that coursework is marked regularly and constructive feedback has been given to the students to improve their work. We support online revision for students through the use of CK-12 teams which contains additional research links, information and quizzes for the students to complete.

## Progression Routes:

Barnhill is one of the only schools in London to offer this qualification which supports progression to a range of job roles within medical research and healthcare sectors such as those within the areas of life sciences: carrying out a range of laboratory and scientific tests to support the diagnosis and treatment of disease. Medical scientists are at the forefront of healthcare services, as they are vital in the diagnosis of disease, determining the effectiveness of treatments and searching for new cures. Alternatively they may progress to careers within physiological sciences, working directly with patients, measuring and evaluating particular organ systems e.g. in neurophysiology recording the electrical activity in the brain.

**Curriculum Leader:** MS. PONNURAJ: [iponnuraj@barnhill.school](mailto:iponnuraj@barnhill.school)

# Music

Course: Applied Exam Board: RSL

## Entry Requirements:

Five or more GCSE Grades 9-4 including English and Maths.

## Assessment:

Coursework (100%) - Six coursework units chosen from the following topics:

- Performing
- Composition
- Contextual Studies
- Music Technology

There are no external examinations for this qualification.

## Course Description:

This course is equivalent to 1.5 A Levels in UCAS points. This course would appeal to anyone interested in studying performing or composition. Last year a Year 13 student was accepted into Berklee College in the USA, one of the top places to study music in the world.

## Extra-Curricular Opportunities:

Students perform in whole school events and are encouraged to perform outside of school too. Visiting artists are brought to school to offer workshops, and students receive the opportunity to visit venues such as music studios. All students receive one to one individual music tuition as well as class tuition.

## Additional Support:

Student progress is tracked lesson by lesson. Students use Microsoft Teams with access to resources and exemplar work. Students receive individualised learning outcomes based on their needs. Independent research and study is encouraged, and students are expected to set independent learning targets to guide and inform their future development on the course.

## Progression Routes:

There are thousands of extremely diverse careers in production, theatre, television and radio. Larger employers are the BBC, Sky, gaming companies, film companies and radio stations where music graduates work in fields as diverse as content programming, mixing, sound editing, engineering and development.

Music graduates can travel the world employed by international tour deployment companies or live sports broadcasting companies. Outstanding graduates are in demand in studios, performance (from cruise bands to show bands) and gaming soundtracks to name a few. Many graduates go on to highly specialist and lucrative fields of music management, broadcast production and music law.

Curriculum Leader: MR TAYLOR: [rtaylor@barnhill.school](mailto:rtaylor@barnhill.school)

# Sport

Course: Applied Exam Board: OCR

## Entry Requirements:

Five or more GCSE Grades 9-4 including English and Maths. GCSE PE or BTEC Level 2 Sport preferable.

## Assessment:

Unit 1 (25%): Body Systems And The Effects Of Physical Activity - Exam (1 hour 30 minutes)

Unit 2 (25%): Sports Coaching And Leadership - Coursework

Unit 3 (16.6%): Sports Organisation Development - Exam (1 hour)

Unit 4 (33.4%): Organisation Of Events And Exercise Psychology - Coursework

## Course Description:

The Sport And Physical Activity course has been designed with the sport sector and workplace in mind. This course provides students with the fundamental knowledge and skills required in a variety of aspects of the sporting industry. The course provides opportunities to assess students' practical coaching skills and their academic writing ability in the coursework focused assignments. The course also allows students to develop confidence in presenting to others, coaching others and in managing projects delivered to others

## Extra-Curricular Opportunities:

Students will be heavily involved with the Sports Leadership Programme which aims to develop younger students sporting and coaching ability.

## Additional Support

The PE department track students' progress through the completion of centre assessed coursework and students will receive regular exam practice followed by thorough feedback. Students will be mentored by a member of the PE team, this will include regular meetings in which the student is supported with coursework or exam preparation. Students will work closely with their mentor to develop their teaching and coaching skills.

## Progression Routes:

Whilst gaining professional, personal and social skills there are many transferable skills such as improved communication, problem solving, time management, research and analytical skills. These skills are essential for a number of different careers and certification for careers such as: sports coach, athlete, PE teacher, sports journalist, personal trainer, fitness instructor, sports marketing, sports therapist, leisure centre manager, sports scientist, performance analyst and sports nutritionist.

Curriculum Leader: MR CLYNE: [rmacbride@barnhill.school](mailto:rmacbride@barnhill.school)

# Entry Requirements

All applications to Barnhill Sixth Form will be considered and offers will be made if pupils are likely to meet the course and subject specific entry requirements. Students will need to perform highly across a minimum of five subjects at GCSE. You will be expected to evidence high standards of conduct, punctuality and attendance in Year 11 to be considered for a place.

To gain entrance into the Sixth Form on to one of our four different pathways we require you to achieve:

PATHWAYS	COURSES	ENTRY REQUIREMENTS
A Levels+	Four A Level subjects - Mostly for pupils completing Maths and Further Maths alongside two other subjects.	Seven or more GCSE grades 9-5 including English, Maths and Science
A Levels	Three A Level subjects.	Five or more GCSE grades 9-5 including English and Maths
Combination	A combination of three A Level and Applied subjects.	Five GCSE grades 9-4 including English and Maths
Applied	Three Applied subjects.	Five GCSE grades 9-4 including English and Maths

Generally we ask for a Grade 6 in the specific A Level subject you wish to study and require five Grade 4s or higher to study the Applied subjects. A detailed list of our subject entrance criteria can be found on the Sixth Form section of the school website.

### Careers Advice

Think carefully before you choose your subjects. Consider whether your Sixth Form subject choices match up with a career you might be interested in or already intend to pursue. Certain degree courses you may like to study often have required subjects at A Level which you must have studied at Sixth Form.

### National Careers Service

To find out more the government National Careers Service provides independent and comprehensive information about all manner of careers, salaries, training needs and entry requirements tracing back to Sixth Form subjects.

For more information then please visit:  
<https://nationalcareers.service.gov.uk/explore-careers>



# How to Apply

We encourage all current Year 11 students to complete the online application form via the school website and welcome applications from October each year. Visit the 'Application Information' page under the Sixth Form section to access our online application form.



### KEY DATES

**19 October**  
Sixth Form Open Evening.

**15 December**  
Deadline for Barnhill students' applications.

**9 February**  
Deadline for external students' applications.

**February**  
Future Focus Evening – all applicants will be interviewed by a member of the Senior Leadership or Sixth Form Team.

**March/April**  
Students receive conditional offer letters.

**June**  
Induction Day – introductory lessons in your chosen subjects and information about summer assignments to make a successful transition into Sixth Form.

**August**  
GCSE Results Day





A: Yeading Lane, Hayes, Hillingdon UB4 9LE  
E: [enquiries@barnhill.school](mailto:enquiries@barnhill.school)  
T: 020 8839 0600  
W: [www.barnhill.school](http://www.barnhill.school)

